

<http://www.all-sewing.com/>
sales@all-sewing.com

Cotton Molleton

Thickness: 2,5 mm
Density: 400 g/sqm
Temperature resistance: appr. 130 C
Steam permeability: very good

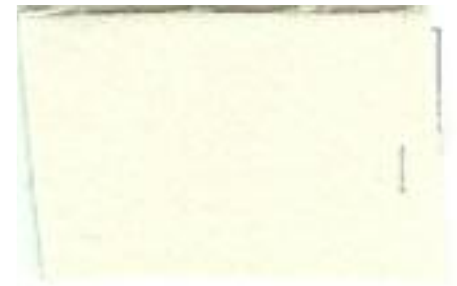
Width

130 cm
150 cm
160 cm
180 cm

Code

0104 01
0104 02
0104 03
0104 04

Intermediate cover cloth for pressing machines and ironing tables, cleansing devices of fusing machines



Twilled, tin-plated copper wire screening

Temperature resistance: appr. 180 C
Steam permeability: good

Width

150 cm

Code

0172 01

Final cover on the head of pressing machines for reducing or eliminating shine and pressing marks



Twilled, tin-plated copper wire screening

Temperature resistance: appr. 180 C
Steam permeability: good

Width

130 cm

Code

0160 01

Final cover on the head of pressing machines



Twilled copper wire screening

Temperature resistance: appr. 180 C
Steam permeability: good

For pressing machines for steam diffusion and
as final cover for reducing and eliminating shine

Width

130 cm

Code**0166 01**

Twilled brass wire screening

Temperature resistance: appr. 180 C
Steam permeability: good

For pressing machines for steam diffusion and
as final cover for reducing and eliminating shine

Width

130 cm

Code**0164 01**

Polyester Cover Cloth

Density: 210 g/sqm
Temperature resistance: appr. 160 C
Steam permeability: very good
Color: dark blue

Final slick cover cloth for ironing tables

Width

150 cm

Code**0245 01**

Polyester Cover Cloth

Density: 155 g/sqm
Temperature resistance: appr. 160 C
Steam permeability: very good
Color: blue

Final non slick cover cloth for pressing
machines and ironing tables

Width

150 cm

Code**0245 02**

Polyamide (Nylon) Cover Cloth

Density: 185 g/sqm
Temperature resistance: appr. 160 C
Steam permeability: very good
Color: blue

Final slick cover cloth for ironing tables

Width

150 cm

Code**0246 02**

Polyamide Stretch Cover Cloth

Density: 230 g/sqm
Temperature resistance: appr. 160 C
Steam permeability: very good
Color: olive

Final cover for all pressing machines, prevents shine

Width

140 cm

Code**0270 01**

Polyamide Stretch Cover Cloth

Density: 230 g/sqm
Temperature resistance: appr. 160 C
Steam permeability: very good
Color: light blue

Final cover for all pressing machines, prevents shine

Width

140 cm

Code**0270 02**

Polyamide Stretch Cover Cloth

Density: 260 g/sqm
Temperature resistance: appr. 160 C
Steam permeability: very good
Color: beige

Heavy final cover for all pressing machines

Width

140 cm

Code**0275 01**

Polyamide Stretch Cover Cloth

Density: 260 g/sqm
Temperature resistance: appr. 160 C
Steam permeability: very good
Color: dark blue

Heavy final cover for all pressing machines

Width

140 cm

Code**0275 02**

Anti-Luster Top Cover

Temperature resistance: appr. 160 C
Steam permeability: very good

Final cover or as intermediate cover material for
pressing machines on heads and ironing tables

Width

160 cm

Code**0260 01**

Anti-Luster Material

Temperature resistance: appr. 160 C
Steam permeability: good

Final cover on arm bucks of ironing tables
for pockets and flaps

Width

150 cm

Code**0262 01**

Anti-Luster Material

Temperature resistance: appr. 160 C
Steam permeability: very good

Intermediate cover material for pressing machines
and ironing tables, as upper and lower layer

Width

150 cm

Code**0264 01**

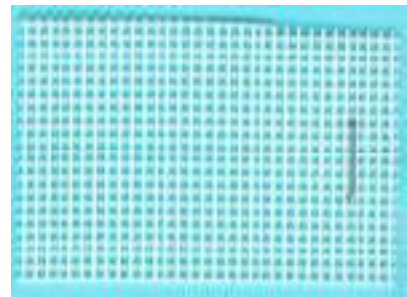
Polyester Vacuum Table Screening

Temperature resistance: appr. 160 C
Steam permeability: very good

For use directly on the plate of vacuum tables
to put simple or double

Width

140 cm

Code**0266 01**

Polyester Screening Extra Fine

Temperature resistance: appr. 160 C
Steam permeability: good

Intermediate cover material on vacuum tables for
pockets and flaps when pressing

Width

160 cm

Code**0268 01**

Ursalit Needle Fabric

Temperature resistance: appr. 160 C
Steam permeability: very good

Final cover on the head of pressing machines
and on ironing tables

Width

150 cm

Code**0271 01**

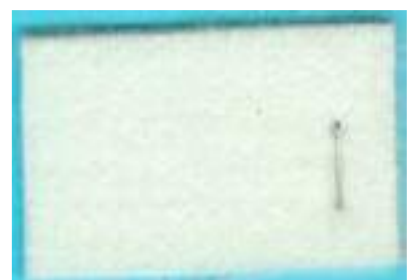
Ursalit / Nomex Needle Fabric

Temperature resistance: appr. 160 C
Steam permeability: good

Final cover on the head of pressing machines
and on ironing tables

Width

150 cm

Code**0272 01**

Multi - Stretch Cover Cloth

Density: 385 g/sqm
Temperature resistance: appr. 90 C
Steam permeability: good
Color: white

Final cover cloth for pressing machines

Width

130 cm

Code**0290 10**

Multi - Stretch Cover Cloth

Density: 530 g/sqm
Temperature resistance: appr. 90 C
Steam permeability: good
Color: white

Final cover cloth for pressing machines

Width

130 cm

Code**0290 20**

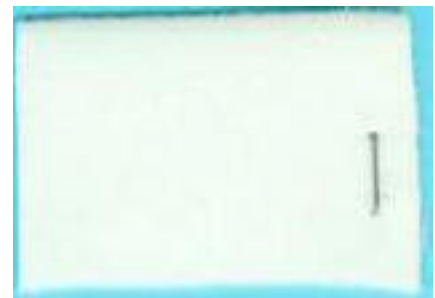
Multi - Stretch Cover Cloth

Density: 620 g/sqm
Temperature resistance: appr. 90 C
Steam permeability: good
Color: white

Final cover cloth for pressing machines

Width

105 cm

Code**0290 30**

Nomex Premium Grade Cover Cloth

Density: 140 g/sqm
Temperature resistance: appr. 200 C
Steam permeability: very good
Color: raw-white

Final cover for ironing tables, pressing
and fusing machines

Width

160 cm

Code**0320 01**

Nomex Premium Grade Cover Cloth

Density: 140 g/sqm
Temperature resistance: appr. 200 C
Steam permeability: very good
Color: blue

Final cover for ironing tables, pressing
and fusing machines

Width

160 cm

Code**0320 02**

Nomex Premium Grade Cover Cloth

Density: 140 g/sqm
Temperature resistance: appr. 200 C
Steam permeability: very good
Color: olive

Final cover for ironing tables, pressing
and fusing machines

Width

160 cm

Code**0320 03**

Teflon Cover Cloth

Density: 300 g/sqm
Temperature resistance: appr. 260 C
Steam permeability: good
Color: dark brown

As cover cloth for roller presses

Width

134 cm

Code

0358 01



Polyester Molleton double pile

Density: 600 g/sqm
Temperature resistance: appr. 160 C
Steam permeability: good
Color: white

Intermediate cover material for pressing machines

Width

160 cm

Code

0108 01



Nomex Needle Felt

Thickness: 4 mm
Density: 300 g/sqm
Temperature resistance: appr. 200 C
Steam permeability: very good
Color: white

Intermediate padding for ironing tables and
pressing
machines – withstands high temperatures

Width

130 cm
160 cm
180 cm

Code

0374 01
0374 02
0374 03



Nomex Needle Felt

Thickness: 6 mm
Density: 600 g/sqm
Temperature resistance: appr. 200 C
Steam permeability: good
Color: white

Intermediate padding for ironing tables and pressing machines – withstands high temperatures

Width

180 cm

Code**0375 03**

Meta - Aramide Needle Felt

Thickness: 6 mm
Density: 500 g/sqm
Temperature resistance: appr. 200 C
Steam permeability: good
Color: white

Intermediate padding for ironing tables and pressing machines – withstands high temperatures

Width

160 cm

Code**0375 33**

Meta - Aramide Needle Felt

Thickness: 5 mm
Density: 500 g/sqm
Temperature resistance: appr. 200 C
Steam permeability: good
Color: white

Intermediate padding for ironing tables and pressing machines – withstands high temperatures

Width

160 cm

Code**0375 49**

100 % Nylon Non-Woven Fabric

Thickness: 10 mm
Temperature resistance: appr. 120 C
Steam permeability: conditional
Color: white

Nylon non-woven needled on foam for presses

Width

130 cm

Code

0378 01



Cusn'h Top

Thickness: 10 mm
Temperature resistance: appr. 150 C
Steam permeability: conditional
Color: white

Padding for pressing machines

Width

140 cm

Code

0378 10



Micropad Ironing Foam Padding

Sheets (2000 x 1000) mm
Hardness: soft
Color: grey

Padding for ironing tables and pressing machines

Thickness

7 mm
10 mm
15 mm
19 mm

Code

1002 01
1002 02
1002 03
1002 04



Micropad Ironing Foam Padding

Sheets: (2000 x 1000) mm
Temperature resistance: appr. 120 C (for 7,10,15 mm)
Steam permeability: good (for 7,10,15 mm)
Hardness: regular
Color: grey

Padding for ironing tables and pressing machines

Thickness

Code

7 mm	1003 01
10 mm	1003 02
15 mm	1003 03
19 mm	1003 04



Soft Fix Silicone Foam Pad

Sheets: (2000 x 1340) mm, (2000 x 940) mm, (1340 x 700) mm
Rolls 10 m: width - 1340 mm and 940 mm
Thickness: 7,5 mm, 10 mm, 15 mm
Temperature resistance: appr. 130 C (for 10, 15 mm)
Steam permeability: very good (for 10, 15 mm)
Hardness: super soft
Color: light red

Padding for ironing tables and pressing machines

Sheets:(2000 x 1340)	Rolls 10 m: width - 1340 mm		
Thickness	Code	Thickness	Code
7,5 mm	0400 01 7,5	7,5 mm	0400 04 7,5
10 mm	0400 01 10	10 mm	0400 04 10
15 mm	0400 01 15	15 mm	0400 04 15

Sheets: (2000 x 940) mm

Thickness	Code
7,5 mm	0400 02 7,5
10 mm	0400 02 10
15 mm	0400 02 15

Rolls 10 m: width - 940 mm

Thickness	Code
7,5 mm	0400 05 7,5
10 mm	0400 05 10
15 mm	0400 05 15

Sheets: (1340 x 700) mm

Thickness	Code
7,5 mm	0400 03 7,5
10 mm	0400 03 10
15 mm	0400 03 15



Soft Fix Silicone Foam Pad

Sheets: (2000 x 1340) mm, (2000 x 940) mm, (1340 x 700) mm
Rolls 10 m: width - 1340 mm and 940 mm
Thickness: 6 mm, 8 mm, 10 mm, 12 mm
Temperature resistance: appr. 130 C
Steam permeability: very good
Hardness: very soft
Color: red brown

Padding for ironing tables and pressing machines

Sheets:(2000 x 1340)	Rolls 10 m: width -1340 mm		
Thickness	Code	Thicknes	Code
6 mm	0415 01 6	6 mm	0415 04 6
8 mm	0415 01 8	8 mm	0415 04 8
10 mm	0415 01 10	10 mm	0415 04 10
12 mm	0415 01 12	12 mm	0415 04 12

Sheets: (2000 x 940) mm

Thickness	Code
6 mm	0415 02 6
8 mm	0415 02 8
10 mm	0415 02 10
12 mm	0415 02 12

Rolls 10 m: width - 940 mm

Thickness	Code
6 mm	0415 05 6
8 mm	0415 05 8
10 mm	0415 05 10
12 mm	0415 05 12

Sheets: (1340 x 700) mm

Thickness	Code
6 mm	0415 03 6
8 mm	0415 03 8
10 mm	0415 03 10
12 mm	0415 03 12



Soft Fix Silicone Foam Pad

Sheets: (2000 x 1340) mm, (2000 x 940) mm, (1340 x 700) mm
Rolls 10 m: width - 1340 mm and 940 mm
Thickness: 6 mm, 8 mm, 10 mm
Temperature resistance: appr. 130 C
Steam permeability: very good
Hardness: soft
Color: yellow

Padding for ironing tables and pressing machines

Sheets: (2000 x 1340)		Rolls 10 m: width - 1340 mm	
Thickness	Code	Thickness	Code
6 mm	0425 01 6	6 mm	0425 04 6
8 mm	0425 01 8	8 mm	0425 04 8
10 mm	0425 01 10	10 mm	0425 04 10

Sheets: (2000 x 940) mm

Thickness	Code
6 mm	0425 02 6
8 mm	0425 02 8
10 mm	0425 02 10

Rolls 10 m: width - 940 mm

Thickness	Code
6 mm	0425 05 6
8 mm	0425 05 8
10 mm	0425 05 10

Sheets: (1340 x 700) mm

Thickness	Code
6 mm	0425 03 6
8 mm	0425 03 8
10 mm	0425 03 10



Soft Fix Silicone Foam Pad

Width: 1340 mm
Temperature resistance: appr. 130 C
Steam permeability: very good
Hardness: medium hard
Color: light blue

Padding for ironing tables and pressing machines

Thickness	Code
6 mm	0430 01 6
8 mm	0430 01 8
10 mm	0430 01 10



Soft Fix Silicone Foam Pad

Sheets: (2000 x 1340) mm, (2000 x 940) mm, (1340 x 700) mm
Rolls 10 m: width - 1340 mm and 940 mm
Thickness: 5 mm, 6 mm, 8 mm, 10 mm
Temperature resistance: appr. 130 C
Steam permeability: very good
Hardness: medium hard
Color: blue

Padding for ironing tables and pressing machines

Sheets:(2000 x 1340)		Rolls 10 m: width - 1340 mm	
Thickness	Code	Thickness	Code
5 mm	0435 01 5	5 mm	0435 04 5
6 mm	0435 01 6	6 mm	0435 04 6
8 mm	0435 01 8	8 mm	0435 04 8
10 mm	0435 01 10	10 mm	0435 04 10

Sheets: (2000 x 940) mm

Thickness	Code
5 mm	0435 02 5
6 mm	0435 02 6
8 mm	0435 02 8
10 mm	0435 02 10

Rolls 10 m: width - 940 mm

Thickness	Code
5 mm	0435 05 5
6 mm	0435 05 6
8 mm	0435 05 8
10 mm	0435 05 10

Sheets: (1340 x 700) mm

Thickness	Code
5 mm	0435 03 5
6 mm	0435 03 6
8 mm	0435 03 8
10 mm	0435 03 10



Soft Fix Silicone Foam Pad

Sheets: (2000 x 1340) mm, (2000 x 940) mm,
(1340 x 700) mm

Thickness: 5 mm, 6 mm, 8 mm, 10 mm

Temperature resistance: appr. 150 C

Steam permeability: very good

Hardness: medium firm

Color: grey green

Padding for ironing tables and pressing machines

Sheets: (2000 x 1340) mm

Thickness	Code
5 mm	0445 01 5
6 mm	0445 01 6
8 mm	0445 01 8
10 mm	0445 01 10

Sheets: (1340 x 700) mm

Thickness	Code
5 mm	0445 03 5
6 mm	0445 03 6
8 mm	0445 03 8
10 mm	0445 03 10

Sheets: (2000 x 940) mm

Thickness	Code
5 mm	0445 02 5
6 mm	0445 02 6
8 mm	0445 02 8
10 mm	0445 02 10



Soft Fix Silicone Foam Pad

Sheets: (2000 x 1340) mm, (2000 x 940) mm,
(1340 x 700) mm

Thickness: 5 mm, 6 mm, 8 mm, 10 mm

Temperature resistance: appr. 160 C

Steam permeability: very good

Hardness: firm

Color: Capri blue

Padding for ironing tables and pressing machines

Improved resistance to heat and hydrolysis

Sheets: (2000 x 1340) mm

Thickness	Code
5 mm	0450 01 5
6 mm	0450 01 6
8 mm	0450 01 8
10 mm	0450 01 10

Sheets: (1340 x 700) mm

Thickness	Code
5 mm	0450 03 5
6 mm	0450 03 6
8 mm	0450 03 8
10 mm	0450 03 10

Sheets: (2000 x 940) mm

Thickness	Code
5 mm	0450 02 5
6 mm	0450 02 6
8 mm	0450 02 8
10 mm	0450 02 10



Soft Fix Silicone Foam Pad

Sheets: (2000 x 1340) mm, (2000 x 940) mm,
(1340 x 700) mm

Thickness: 5 mm, 6 mm, 8 mm, 10 mm

Temperature resistance: appr. 150 C

Steam permeability: good

Hardness: hard

Color: turquoise

Padding for ironing tables and pressing machines

Sheets: (2000 x 1340) mm

Thickness	Code
5 mm	0475 01 5
6 mm	0475 01 6
8 mm	0475 01 8
10 mm	0475 01 10

Sheets: (1340 x 700) mm

Thickness	Code
5 mm	0475 03 5
6 mm	0475 03 6
8 mm	0475 03 8
10 mm	0475 03 10

Sheets: (2000 x 940) mm

Thickness	Code
5 mm	0475 02 5
6 mm	0475 02 6
8 mm	0475 02 8
10 mm	0475 02 10



Soft Fix Silicone Foam Pad

Sheets: (2000 x 1340) mm, (2000 x 940) mm,
(1340 x 700) mm

Thickness: 6 mm, 8 mm, 10 mm, 13 mm

Temperature resistance: appr. 180 C

Steam permeability: very good

Hardness: medium hard

Color: rusty red

Padding for ironing tables and pressing machines

Excellent resistance to heat and hydrolysis

Sheets: (2000 x 1340) mm Sheets: (1340 x 700) mm

Thickness	Code	Thickness	Code
6 mm	0455 01 6	6 mm	0455 03 6
8 mm	0455 01 8	8 mm	0455 03 8
10 mm	0455 01 10	10 mm	0455 03 10
13 mm	0455 01 13	13 mm	0455 03 13

Sheets: (2000 x 940) mm

Thickness	Code
6 mm	0455 02 6
8 mm	0455 02 8
10 mm	0455 02 10
13 mm	0455 02 13



Rehau Silicon Foam

Sheets: (1300 x 700) mm, (1800 x 900) mm

Thickness: 4,5 mm, 6 mm, 8 mm, 10 mm

Temperature resistance: appr. 180 C

Steam permeability: medium

Hardness: medium hard

Color: ivory

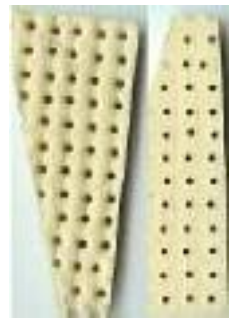
Under pad for ironing tables and pressing machines

Sheets: (1300 x 700) mm

Thickness	Code
4,5 mm	0801 01

Sheets: (1800 x 900) mm

Thickness	Code
4,5 mm	0801 02
6 mm	0801 03
8 mm	0801 04
10 mm	0801 05



Rehau Silicon Foam

Sheets: (1800 x 900) mm

Thickness: 9 mm

Temperature resistance: appr. 180 C

Steam permeability: medium

Hardness: medium hard

Color: blue-green

Medium firm, padding for pressing machines

Thickness Code

9 mm **0803 01**



Rehau Silicon Foam

Sheets: (1800 x 900) mm

Thickness: 9 mm, 6 mm

Temperature resistance: appr. 180 C

Steam permeability: medium

Hardness: medium hard

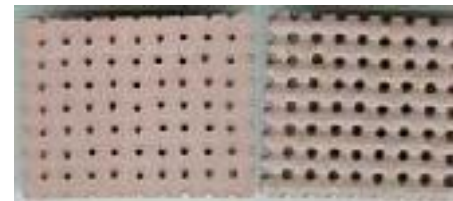
Color: dusty pink

Padding for fusing- and laundry pressing machines

Thickness Code

6 mm **0805 01**

9 mm **0805 02**

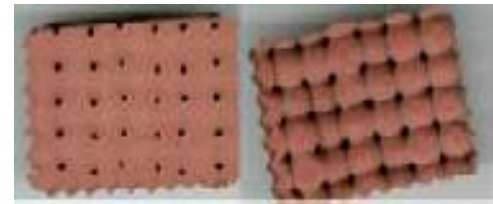


Rehau Silicon Foam

Sheets: (1800 x 900) mm , (1300 x 700) mm
Thickness: 10 mm, 13 mm, 15 mm
Temperature resistance: appr. 180 C
Steam permeability: soft
Hardness: soft
Color: rusty red

Thickness**Code**

1800x900x10mm **0809 01**
1800x900x15mm **0809 02**
1300x800x10mm **0809 04**



Padding for presses, especially trousers pressing machines, wrinkle free and permanent presses

Special Ironing Foam

Sheets: (2000 x 1300) mm
Thickness: 5 mm, 7 mm, 10 mm
Temperature resistance: appr. 100 C
Steam permeability: good
Color: blue

Thickness**Code**

5 mm **0906 01**
7 mm **0906 02**
10 mm **0906 03**



Padding for ironing tables

PTFE - Coated Glass Fabric

Widths: 1000x0,15mm
Temperature resistance: 260 C
Steam permeability: no
Color: static brown

Width**Code**

1000x0,15mm **0340 01**



For the use on fusing and heat transfer machines

PTFE - Coated Glass Fabric

Widths: 1000x0,15mm
Temperature resistance: 260 C
Steam permeability: condition
Color: static brown
standard perforation

Width**Code**

1000x0,15mm **0340 02**



For pockets and flaps to avoid pressure marks

PTFE - Coated Glass Fabric

Widths: 1000x0,15mm
Temperature resistance: 260 C
Steam permeability: no
Color: static brown
special perforation

Width

1000x0,15mm

Code**0340 03**

For pockets and flaps to avoid pressure marks



PTFE - Coated Glass Fabric

Widths: 1000x0,15mm
Temperature resistance: 230 C
Steam permeability: no
Color: static brown
one side self-adhesive

Width

1000x0,15mm

Code**0340 04**

Repair patches for belts and stripping plates



PTFE-Glass Fabric Antistatic Black

Widths: 1000x0,15mm
Temperature resistance: 260 C
Steam permeability: no
Color: black

Width1000x0,15mm
1000x0,15mm**Code****0350 01**
0350 02 perforated

For the use on fusing and heat transfer machines

[Возможные варианты склеивания ленты](#)

[Угол склеивания ленты](#)



PTFE-Glass Fabric Antistatic Black

Temperature resistance: 260 C
Steam permeability: no
Color: black

Width1000x0,25mm
1200x0,25mm
1400x0,25mm
1500x0,25mm**Code****0352 02**
0352 03
0352 04
0352 05

For the use on fusing and heat transfer machines.
Conveyor belts

[Возможные варианты склеивания ленты](#)

[Угол склеивания ленты](#)



PTFE-Glass Fabric Antistatic Black

Temperature resistance: 260 C

Steam permeability: no

Color: black

For the use on fusing and heat transfer machines

Width

1000x0,36mm

1016x0,36mm

1200x0,36mm

1370x0,36mm

1830x0,36mm

Code**0354 01****0354 02****0354 03****0354 04****0354 05**[Возможные варианты слеивания ленты](#)[Угол склеивания ленты](#)